



# PROOWOOD

## ORMAN ÜRÜNLERİ

FOR EXORT IMPORT



Suspended Ceiling  
Catalog

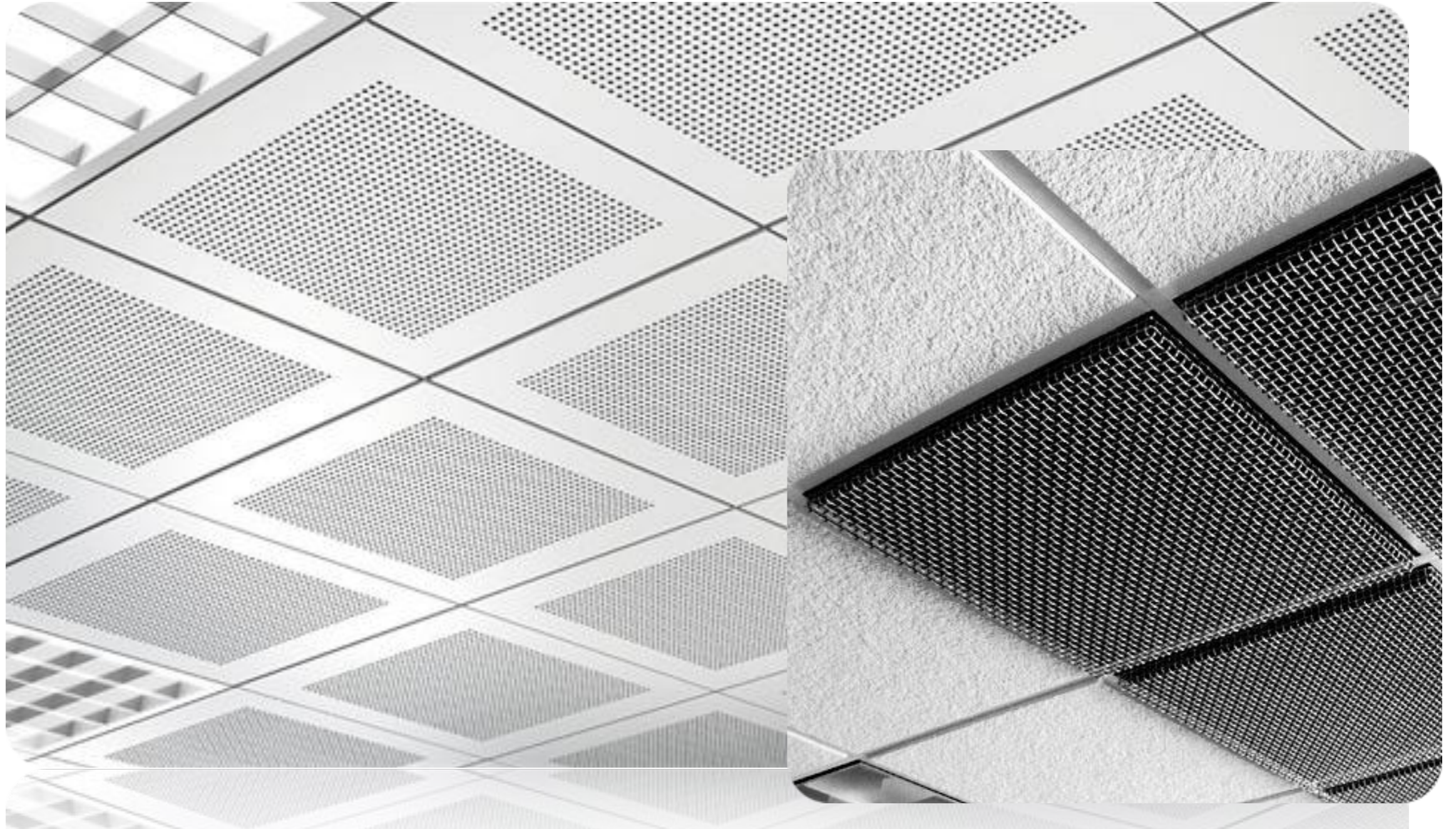
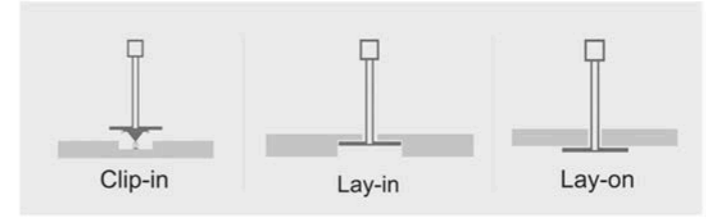
## Metal Suspended Ceiling

300 X 300 MM  
METAL  
SUSPENDED  
CEILING

600 X 600 MM  
METAL  
SUSPENDED  
CEILING

### Technical Specifications

Clip-in	Panel Thickness	0.5 ~ 0.8 mm aluminum
	Panel Size	300 x 300 mm   600 x 600 mm   600 x 1200 mm   300 x 600 mm
	Perforation	Full Hole-10 cm bordure
Lay-in	Panel Thickness	0.5 ~ 0.8 mm aluminum
	Panel Size	300 mm x 300 mm   600mm x 600 mm   600 mm x 1200 mm
	Perforation	Full Hole-10 cm bordure
Lay-on	Panel Thickness	0.5 ~ 0.8 mm aluminum
	Panel Size	300 mm x 300 mm   600mm x 600 mm   600 mm x 1200 mm
	Perforation	Full Hole-10 cm bordure



## ACOUSTIC PANELS

Suspended ceiling profile is presented to our customers with its excellent resistance to water, decorative patterns, light weight and easy installation.

Suspended ceilings are ideal systems which are produced in accordance with international standards, which allow for easy laying and concealment of electrical and sanitary installations and features such as acoustic and fire resistance.

• It is used in all kinds of indoor ceiling applications.

- Creates decorative spaces by hiding installations. They are also convenient and easy to intervene in the installation.
- Due to its light weight, it has little effect on the building system. Suitable systems for the movement of the building.
- Versatile systems that can meet the performance requirements such as fire resistance, sound and heat insulation.
- Applicable with minimum amount of accessories. Saves shipping and labor.

Suspended ceiling profile is presented to our customers with its excellent resistance to water, decorative patterns, light weight and easy installation. Suspended ceilings are ideal systems which are produced in accordance with international standards, which allow for easy laying and concealment of electrical and sanitary installations and features such as acoustic and fire resistance.

• It is used in all kinds of indoor ceiling applications.

- Creates decorative spaces by hiding installations. They are also convenient and easy to intervene in the installation.
- Due to its light weight, it has little effect on the building system. Suitable systems for the movement of the building.
- Versatile systems that can meet the performance requirements such as fire resistance, sound and heat insulation.
- Applicable with minimum amount of accessories. Saves shipping and labor.



# PROOWOOD

ORMAN ÜRÜNLERİ

FOR EXORT IMPORT

## MINERAL FIBER SUSPENDED CEILING



**PROOWOOD**  
ORMAN ÜRÜNLERİ  
FOR EXORT IMPORT



Best  
Quality  
You  
Can  
Find

# PROOWOOD

## ORMAN ÜRÜNLERİ

FOR EXPORT IMPORT

### PLASTIC PVC Ceiling Suspended System

#### Technical Specifications

Panel	PVC
Panel Dimensions	600mm - 600mm
Panel Thickness	7,5 mm
Front Surface	Color laser transfer
Panel Weight	2,5 kg
Fire Class	A1



**VINYL COATED  
PLASTER  
PANELS**

Technical Specifications	
Panel	Gypsum Board
Panel Dimensions Width	min.300mm - max.1200mm
Panel Dimensions Height	min. 300mm - max 2400mm
Panel Thickness	8 - 9.5 - 12.5mm
Front Surface	Pvc Vinyl Coated
Back Surface	Aluminium Foil Coated
Panel Weight	7 kg/m <sup>2</sup>
Fire Class	A1

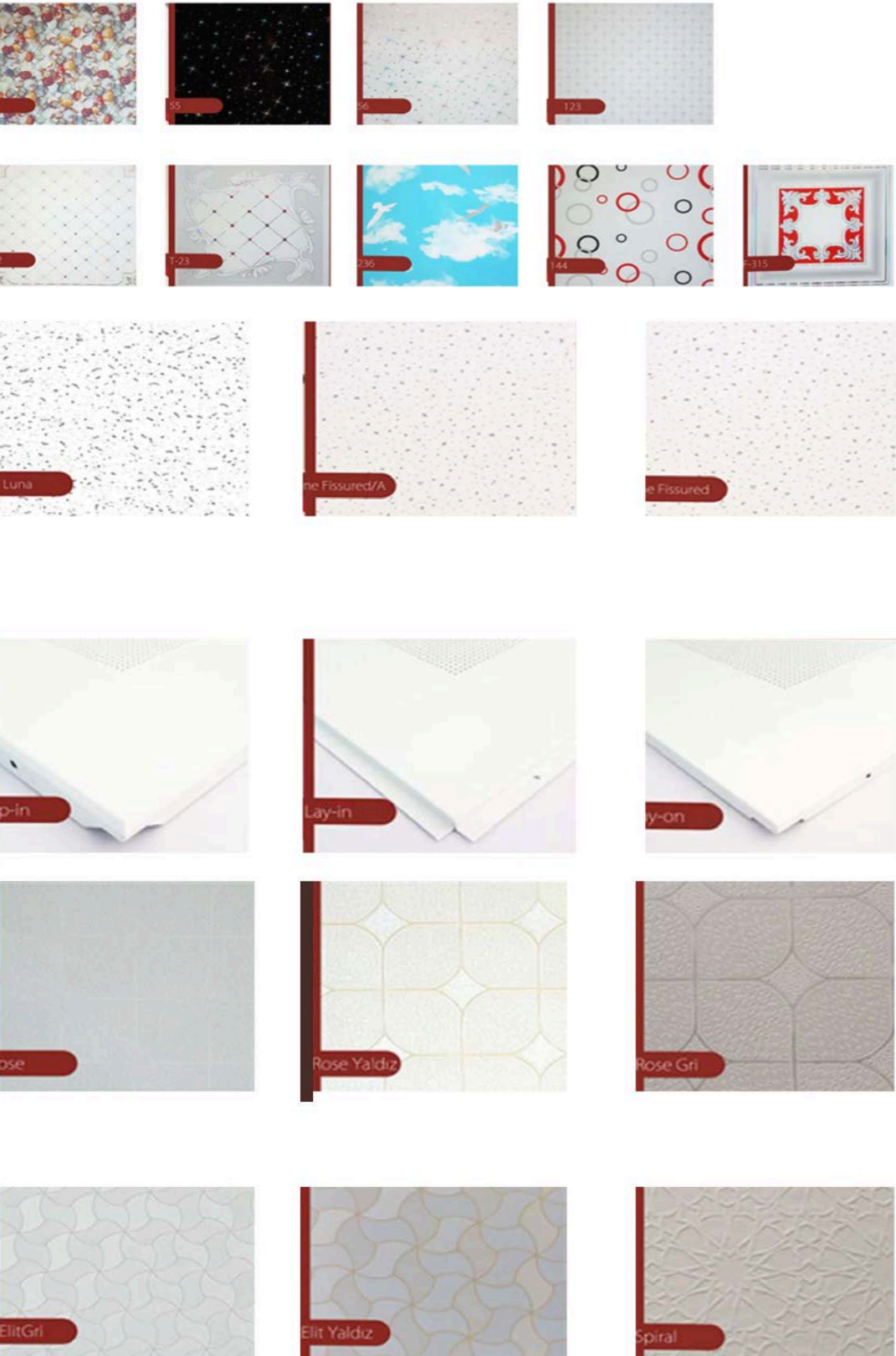


# PROWOOD

ORMAN ÜRÜNLERİ

FOR EXORT IMPORT

## COLOR CHART



## PLASTIC PVC Ceiling Suspended System

### ACOUSTIC PANELS

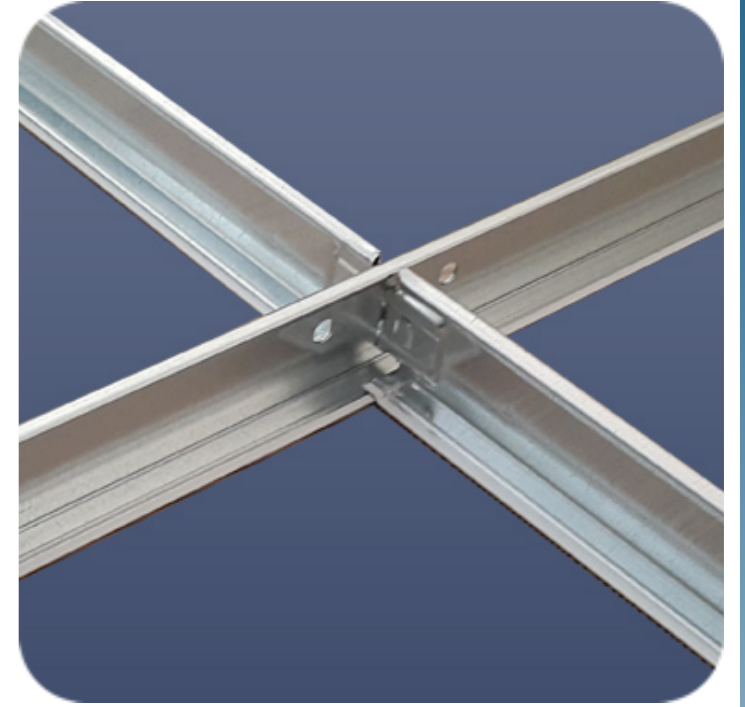
### Metal Suspended Ceiling

### MINERAL FIBER SUSPENDED CEILING





### T-24 CARRIER SYSTEMS (Suspension Systems)

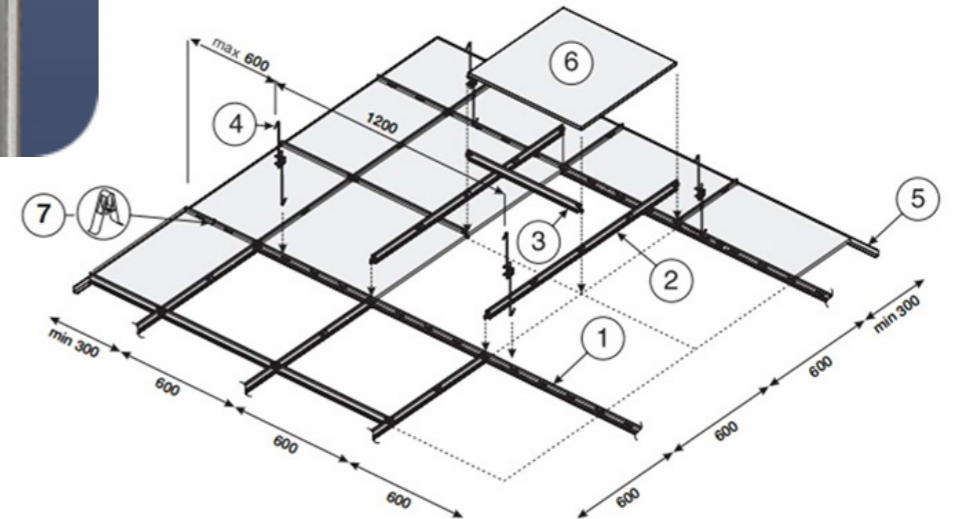


#### Use Details

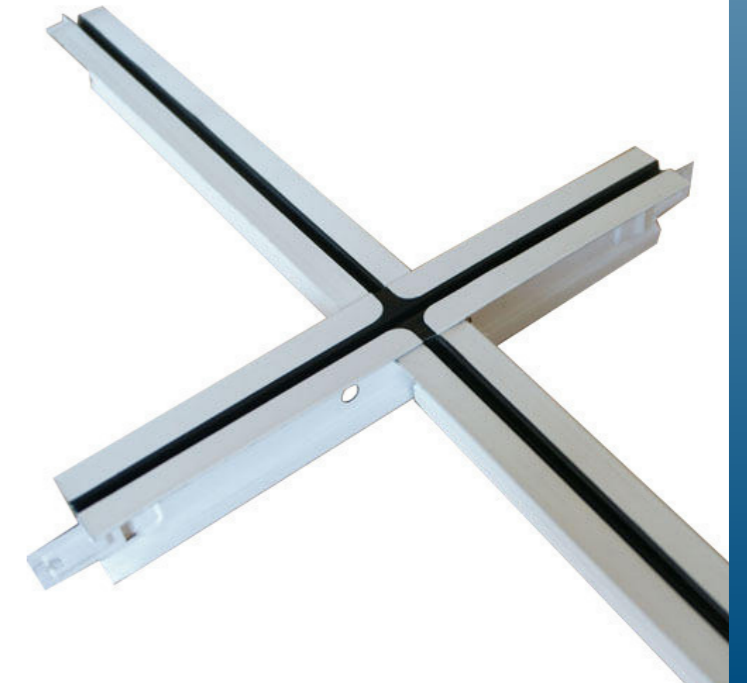
Main Tee	35x24x3600x0.33 mm
Cross Tee	26.50x24x1200x0.40 mm
Cross Tee	26.50x24x0600x0.40 mm
Cross Tee	26.50x24x0300x0.40 mm
I Profiles	20x20x3000x0.45 mm
Hanger Wire	
Double Spring	
Steel Anchor	

#### T-24 Carrier Usage Analysis

Material	30x30	30x60	30x120	60x60	60x120	120x120
T-24 3600 Main Tee	0,83 mt/m <sup>2</sup>	0,83 mt/m <sup>2</sup>	0,83 mt/m <sup>2</sup>	0,83 mt/m <sup>2</sup>	0,83 mt/m <sup>2</sup>	0,83 mt/m <sup>2</sup>
T-24 1200 Long Cross Tee	3,00 mt/m <sup>2</sup>	1,67 mt/m <sup>2</sup>	3,32 mt/m <sup>2</sup>	1,67 mt/m <sup>2</sup>	1,67 mt/m <sup>2</sup>	0,83 mt/m <sup>2</sup>
T-24 600 Short Cross Tee	.....	2,50 mt/m <sup>2</sup>	.....	0,83 mt/m <sup>2</sup>	.....	.....
T-24 300 Short Cross Tee	2,50 mt/m <sup>2</sup>	.....	.....	.....	.....	.....
T-24 L Profiles	0,60 mt/m <sup>2</sup>	0,60 mt/m <sup>2</sup>	0,60 mt/m <sup>2</sup>	0,60 mt/m <sup>2</sup>	0,60 mt/m <sup>2</sup>	0,60 mt/m <sup>2</sup>



### T-24 Ceiling Suspension Grids

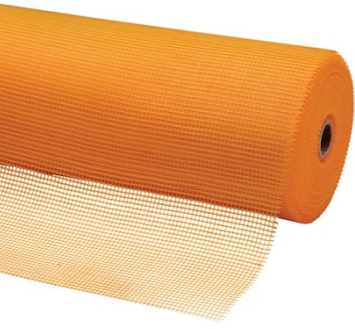


#### Use Details

Main Tee	32x24x3600x0.32 mm
Long Cross Tee (Single hole)	32x24x1200x0.32 mm
Long Cross Tee (Three-hole)	32x24x1200x0.32 mm
Short Cross Tee (No holes)	32x24x0600x0.32 mm
Short Cross Tee (Single hole)	32x24x0600x0.32 mm
Short Cross Tee (No holes)	32x24x0300x0.32 mm
I Profiles	20x20x3000x0.45 mm
Hanger Wire	
Double Spring	
Steel Anchor	

#### Usage Analysis

Material	30x30 modulation	30x60 modulation	60x60 modulation	60x120 modulation
T-24 3600 Main Tee	0,83 mt/m <sup>2</sup>	0,83 mt/m <sup>2</sup>	0,83 mt/m <sup>2</sup>	0,83 mt/m <sup>2</sup>
T-24 1200 Long Cross Tee	3,32 mt/m <sup>2</sup>	1,67 mt/m <sup>2</sup>	1,67 mt/m <sup>2</sup>	1,67 mt/m <sup>2</sup>
T-24 600 Short Cross Tee	-----	2,50 mt/m <sup>2</sup>	0,83 mt/m <sup>2</sup>	-----
T-24 300 Short Cross Tee	2,50 mt/m <sup>2</sup>	-----	-----	-----
T-24 L Profiles	0,83 mt/m <sup>2</sup>	-----	0,50 mt/m <sup>2</sup>	-----



### sheathing mesh

#### Technical Specifications

Weight	Mesh Size	Color	Width	Length	Roll Weight
160 gr.	4x4	Orange	1 mt.	50 mt.	8 kg.
145 gr.	4x4	Blue	1 mt.	50 mt.	7.25 kg.
75 gr.	4x4	Blue	1mt.	50 mt.	3.75 kg.
90 gr.	3.x3	White	5 cm	90 mt.	-



### Drilling screws

- Size: M3.5 x 25mm
- Piece: 1000 Pieces / Box



### Pointed Screw

- Size: M3.5 x 25mm
- Piece: 1000 Pieces / Box



### Chipboard screws

- Size: M22 x 45mm
- Piece: 3000 Pieces / Box



### Plastic Dubel

- Size: 8 mm
- Piece: 1000 Quantity / Package





## REACH US



[WWW.PROOWOOD.COM](http://WWW.PROOWOOD.COM)



+90 539 552 1799  
+90 532 499 9127



**Kızılarık**  
**mah.Kızılırmak.Cad.H.çoba**  
**n iş merkezi B blok / no**  
**135/Daire 7 kat 2**  
**Antalya /Muratpasa**

# PROOWOOD

## ORMAN ÜRÜNLERİ

FOR EXORT IMPORT

